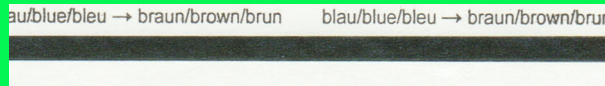


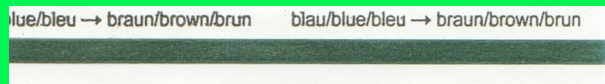
Colour reference chart

for all **gke Steri-Record[®]** process indicators
for steam sterilization processes

The pack with these indicators has passed a steam sterilization process



Brown/black indicator → Saturated steam conditions in the sterilizer.
The indicator is sterilized.

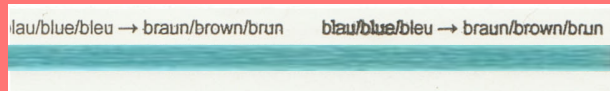


Blue-greenish/brownish indicator → the indicator is sterilized in super-heated steam. (*)
(a longer sterilization time produces a darker colour version)

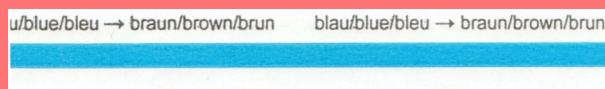
Note

(*) Super-heated steam may be generated by a pressure reducing valve in the steam pipe before the sterilizer entrance due to high sterilizer wall temperatures or due to hygroscopic condensation inside cellulose packages in the sterilizer. Type 1 indicators indicate superheated steam by a greenish-brown colour change. This colour change of the indicator is no proof of an insufficient sterilization process and must be checked by a validation procedure. The same indicator showing super-heated conditions on a pack may show a black colour inside a pack because inside the pack load and condensate may compensate super-heat conditions.

The pack with these indicators has NOT passed a steam sterilization process



Blue-greenish indicator → the indicator is sterilized in dry heat
(the colour varies depending on sterilization time - the longer, the darker)



blue indicator (untreated) → the indicator is not sterilized.